

000906

2021-18

2021 3 20

6.14 /

1,941,370,902.04

2017

2018

2019

2020 1-9

10,679,892.44

12,962,854.37

14,237,885.61

12,771,849.51

435,753.27

419,856.76

514,827.10

264,531.72

2020 9 30

财55,158,660.31

财10,699,190.53

包 5,372,103.81

产

案

6.14 /

1,941,370,902.04

2017

2018

2019

2020 1-9

10,679,892.44

12,962,854.37

14,237,885.61

12,771,849.51

435,753.27

419,856.76

514,827.10

264,531.72

2020 9 30

财55,158,660.31

财10,699,190.53

包 5,372,103.81

成

--	--	--

成

		2021 3 19
		2021 4 14

30

30

32

2021 4 16

2021 5 17

5%

5	财	300,000.00	25.5% 8%

6.14 /

30

6.49 /

案

1

案

案

6

6

案

2

8.18%

3

2021 3 19

55,191,732

6.14

338,877,234.48

311,605,652

46.20%

33,721,816

6.14

207,051,950.24

33,721,816

5.00%

4

6

6

2020

9

11

2021

3

12

7.43 /

6.82 /

-8.21%

801202. SI

3,946.21

3,826.74

-3.03%

886022. WI

2,751.41

2,642.46

-3.96%

H30201

4033.85

3801.52

-5.76%

6

5

1

6

2

3

1

6.14 /

成 成

2

案

1

30

6.14 /

30

6.49 /

1

案

案

6

6

8.18%

成

案

2

55,191,732

8.18%

256,413,920

38.02%

311,605,652

46.20%

案

成

3

2021 3 19

55,191,732

6.14

33,721,816

6.14

90%

4

2021

3 12

6.14

			TTM	
1		财	5.40	0.85
2			10.86	1.22
3	财		8.36	0.97
4		财	4.11	0.72
			7.18	0.94
5			7.51	1.52

wi nd

7.51

1.52

7.18

0.94

5

6.14

2021 3

12

90%

20

80%

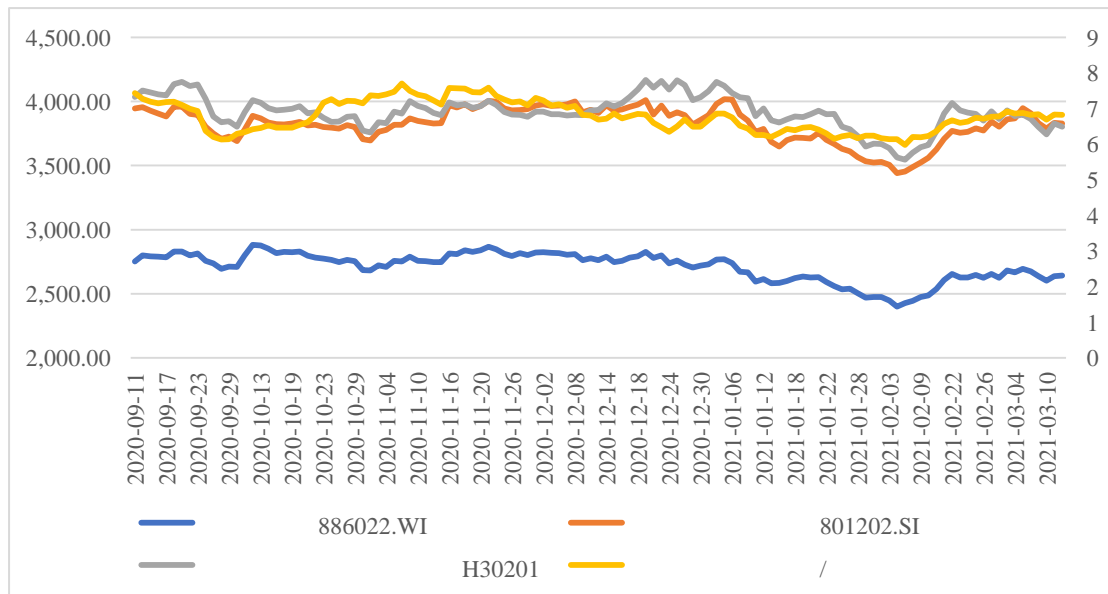
5.33

15.20%

6

6

6



2020 9 11 2021 3 12

7.43 / 6.82 /

-8.21%

801202.SI

3,946.21

3,826.74

-3.03%

886022.WI

2,751.41

2,642.46

-3.96%

H30201 4033.85 3801.52 -5.76%

6

7

886022. WI 801202. SI
H30201

	2021/3/12-2021/3/22	2021/3/12-2021/4/1
	4.55%	12.76%
801202. SI	2.43%	3.91%
886022. WI	2.55%	1.94%
H30201	1.41%	-0.03%
399001	-0.98%	0.59%

报

参

8

1

6

2

3

30

30

,

‘

30

,

‘

案

案

,

成

2021 4 15