

" " " " 2021

3 20

1

6.14 /

2

1

30

6.49 /

2

6

3

6.14 /

90%

30

6.14 /

30

6.49

/

1

"

6

"

6

8.18%

2

55,191,732

8.18%

256,413,920

38.02%

311,605,652

46.20%

3

2021 3 19

55,191,732

6.14

33,721,816

6.14

90%

4

2021 3 12

6.14

			TTM	
1			5.40	0.85
2			10.86	1.22
3			8.36	0.97
4			4.11	0.72
			7.18	0.94

			TTM	
5			7.51	1.52

wind

7.51

1.52

7.18

0.94

5

6.14

2021 3 12

90%

20

80%

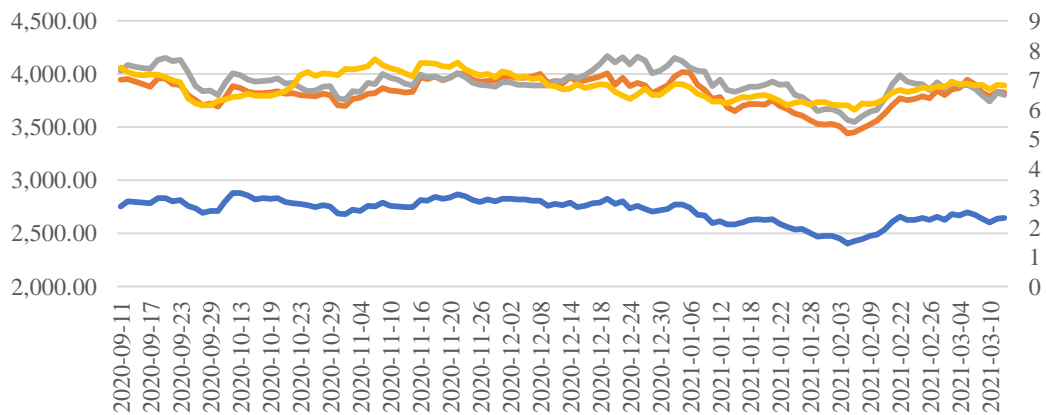
5.33

15.20%

6

6

6



2020 9 11 2021 3 12

7.43 /

6.82 /

-8.21%

801202.SI 3,946.21

3,826.74

-3.03%

886022.WI

2,751.41	2,642.46	-3.96%	H30201
4033.85	3801.52	-5.76%	

6

7

801202.SI

886022.WI

H30201

	2021/3/12-2021/3/22	2021/3/12-2021/4/1
	4.55%	12.76%
801202.SI	2.43%	3.91%
886022.WI	2.55%	1.94%
H30201	1.41%	-0.03%
399001	-0.98%	0.59%

8

" 1

6

2

3

"

30

5

>

<